



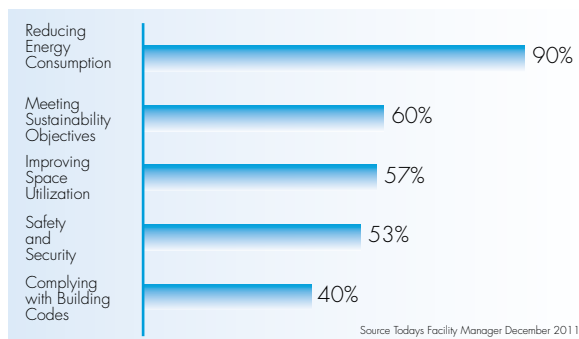
Intelligent lighting network solutions for offices

Today's facility professionals are looking for ways to improve energy efficiency and sustainability. At the same time, they are expected to deliver more performance for less cost. CommScope's Redwood portfolio of intelligent lighting network solutions offers a single cost-effective platform to power and control lighting—plus a high-density sensor grid that monitors environmental data. The result is lower-cost, higher-performing workplaces. This industry-leading solution is used by a growing number of Fortune 500 customers to deliver average lighting energy savings of 75 percent, but also rich data showing occupancy, temperature and power usage throughout a building. The system's award-winning approach uses patented networking technology and a low-voltage dc architecture to achieve a breakthrough reduction in planning, installation and commissioning costs.*

- Reduce lighting energy costs by an average of 75 percent
- Receive granular data on building occupancy and temperature
- Low-voltage approach dramatically reduces design, installation and commissioning time

* The Redwood system has been deemed SELV (Safety Extra Low Voltage) under IEC 60950

CommScope assists with facility professionals' top 5 challenges



Best-in-class savings

With lighting accounting for 35 percent of a typical building's energy use, a well-planned lighting and control strategy is critical to any energy-efficient building. CommScope's Redwood solution can reduce energy use by 75 percent on average through advanced dimming, scheduling, occupancy detection, daylighting, and task tuning strategies at an unprecedented per-fixture level.

Lighting control options

		CODE-COMPLIANT CONTROLS	ADVANCED CONTROLS	BUILDING-PERFORMANCE
Energy Savings	Full-range dimming	—	●	●
	Tailored occupancy	●	●	●
	One-button daylight harvesting	—	—	●
	Flexible scheduling	●	●	●
	LEED point contribution	●	●	●
	Demand response	—	—	●
	Level of energy savings	●	●	●
Building Intelligence	Space utilization reporting	—	●	●
	Temperature mapping	—	—	●
	Comprehensive power metering	—	●	●
	Real-time data and alerts	—	●	●
Platform Flexibility	Simple setup and operation	●	—	●
	Extensible sensor platform	—	—	●
	Web and mobile device access	—	●	●
	Scalable, reliable, and secure	—	●	●

Instantly gather building intelligence

Leveraging the high-density network of Redwood sensors, facility professionals gain access to a rich set of environmental data that can be useful for:

- **Meeting Planning**—enables occupants to see actual conference room availability based on presence rather than calendar scheduling.
- **Space Utilization**—reports on office or conference room utilization rates with estimates of how full spaces are when occupied.
- **Temperature Tracking**—monitors temperature throughout a facility and sends alerts for “out of band” conditions.
- **Security Alerts**—detects unauthorized access during specified time periods and sends alerts with precise location information.



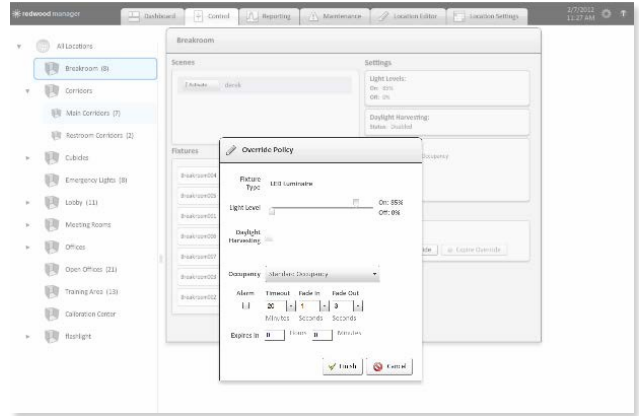
Lower installation and maintenance costs

Modern offices require a lighting solution that is simple to install and is robust in its capabilities. Redwood’s innovative DC low-voltage, networked approach to lighting creates continuous savings.

1. Installation costs are reduced up to 50 percent due to low-voltage “plug and play” set up.
2. Commissioning time is reduced from days to hours.
3. Maintenance costs are reduced up to 80 percent because the Redwood solution operates LEDs at cooler temperatures, maximizing their already long life and requiring no bulb or ballast replacements.

Web-based control

Management features can be reached from anywhere via the Web-based Redwood interface. Commission the system, get detailed information on energy use, motion or temperatures—all in one location. Facility managers can easily change policies to be more or less aggressive with energy savings policies or decide if they wish to provide individual users control over their specific lighting requirements.



Easy-to-set lighting policies help meet energy-savings targets

Easily make configuration changes

The Redwood interface makes it easy to re-provision space. “Drag and drop” fixture icons to reconfigure locations or policies in seconds. Low-voltage cable powering and controlling the lights can be re-utilized to route to new or changed fixtures quickly and safely.

Gain leed credits

The table illustrates the categories in LEED 2009 applicable energy savings, lighting controls, and verification and measurement capabilities of the system, along with the possible points the Redwood solution can deliver. You can gain similar advantages against BREEAM and other certifications standards as well.

CATEGORY / CREDIT	POSSIBLE
Optimize Energy Performance	1 - 19
Enhanced Commissioning	2
Measurement & Verification	3
Controlability of Systems – Lighting	1
Thermal Comfort – VERIFICATION	1
Innovation in Design	3
Total Possible Points	29

We're proud to be a part of your network's story

Here at CommScope, we embrace our role as a trusted resource, partner and facilitator. We create the infrastructure that connects the world and evolves with every advance in technology. By investing all of our capabilities, resources, relationships and products into your toughest challenges, we continue our long history of solving problems together—paving the way for new ideas and fresh ways of thinking.

We're a trusted resource and partner around the world because we're invested in you: your people, your networks, your success. It inspires us to build relationships and infrastructure ... connect people and technologies across protocols, oceans and time zones ... and share what we learn along the way. We'll never stop connecting and evolving networks for the business of life at home, at work and on the go.

**This is our promise to you.
This is CommScope.**

COMMScope®

www.commscope.com

Visit our website or contact your local CommScope representative for more information.

© 2014 CommScope, Inc. All rights reserved.

All trademarks identified by ® or ™ are registered trademarks or trademarks, respectively, of CommScope, Inc.

This document is for planning purposes only and is not intended to modify or supplement any specifications or warranties relating to CommScope products or services.

BR-107693.1-EN [04/14]